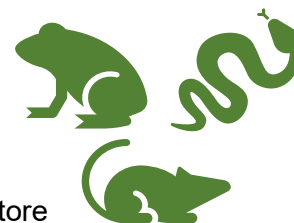


**SPECIMEN WASTE**

- Specimen waste, including animal parts, tissues, fluids, or carcasses preserved with formaldehyde, formalin, or other preservatives, must be disposed of by EH&S.
- Place specimens intended for reuse back into bags or buckets and seal them securely (bags should be folded over at the end and secured with a zip tie). Store these in the appropriate location.
- Specimens that will not be reused must be removed from their preservative, bagged in yellow heavy-duty hazard bags, and placed in yellow collection cans or bins. Yellow bags should be clearly labeled with the contents, date of collection, and the words “For Disposal.” Ensure that there are no liquids or leaks from the bags.
- Preserved specimens should NOT be disposed of in biohazard bags or bins, as they are not biohazardous and should not be autoclaved or incinerated.
- Liquid preservative should be kept in their original container or poured off into another labeled container and disposed of separately by EH&S.
- Non-infectious animals and those that have not been preserved may be double bagged in black plastic bags and disposed of in the dumpster. Lab animals that may be infectious must be bagged in red biohazardous bags and placed in biohazard containers.
- Disposable gloves, paper towels, and other materials used to handle specimens should be disposed of in the regular trash.
- When specimens are ready for pick up, contact EH&S for disposal.



To dispose of specimen waste and related materials, please submit an online pickup request using the EH&S Chemical/Bio Waste Pickup Request form available at: <https://csn.campusoptics.com/hw/chemical-bio-waste-pick-up-request-form>. Please contact EH&S at 702-651-7445 or [ehs@csn.edu](mailto:ehs@csn.edu) if you have any questions.